



**ZISTA Group**

[www.zistagroup.com](http://www.zistagroup.com)

# An Overview on IRANIAN STONE SUPPLY

**Headoffice:**



No. 6B, North Didar Street, Africa Boulevard, Tehran, Iran



+98 21 8877 7835



[www.zistagroup.com](http://www.zistagroup.com)



[info@zistagroup.com](mailto:info@zistagroup.com)



Being the world's fifth richest country in natural resources, Iran has numerous number of mines and minerals within its land, including a vast spectrum of construction stone quarries. Among the normal colors available such as cream, there are special colors of stone which can only be resourced in a few countries such as leather green or cream orange Onyx.

After exploitation of Blocks from the mine Onyx, Marble, Travertine, Granite or Limestone with various colors are transported to factories for being cut into slabs and tiles. The stone is finally packed inside metal boxes (for Slabs) wooden crates (for Tiles) shrink wrapped and palletized to be ready for international delivery and logistics.

**“ Zista Group, with experience in the field, has been exporting various Marble Stone in form of Blocks, Slabs and Tiles to European and South American markets providing modern trading method for this ancient trading corridor.**

**”**





ONYX



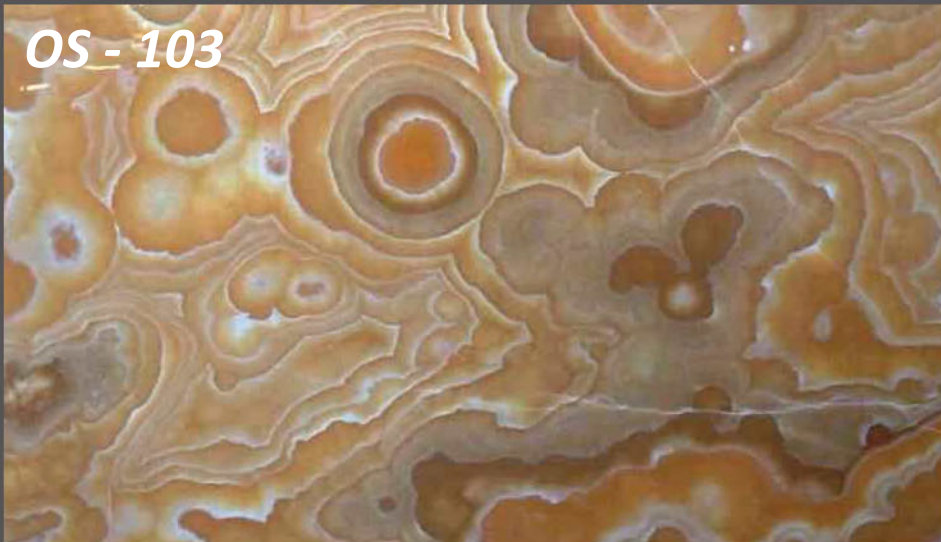
**OS - 101**



**OS - 102**



**OS - 103**



**OS - 104**





**OS - 105**



**OS - 106**



**OS - 107**

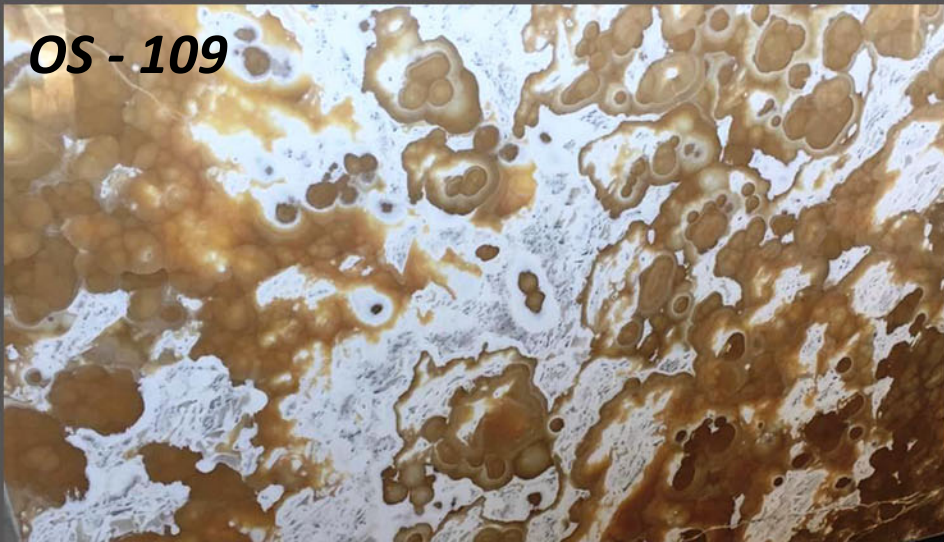


**OS - 108**

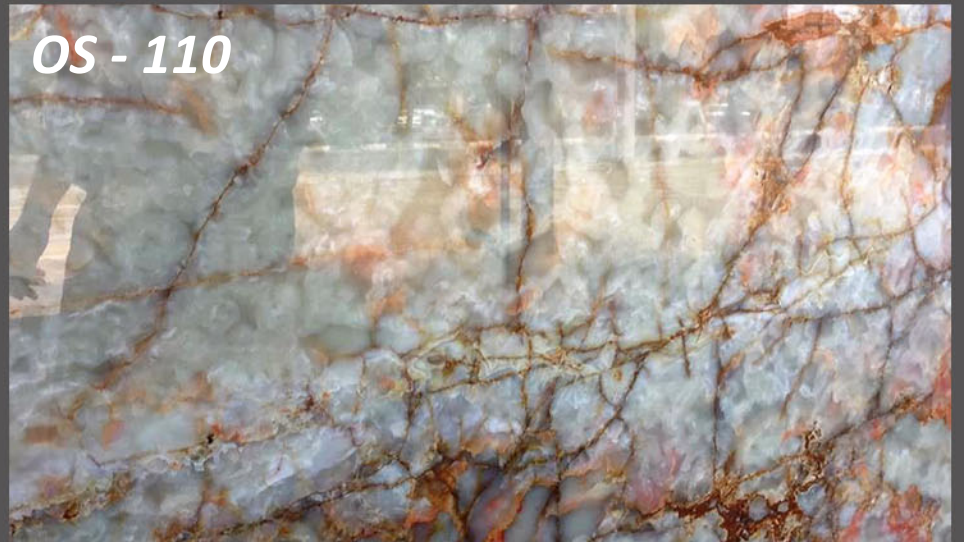




**OS - 109**



**OS - 110**



**OS - 111**





A close-up photograph of a marble processing factory. In the foreground, several vertical slabs of light-colored marble with dark veining are visible. Above them, a dense spray of water falls from a series of horizontal metal bars, creating a misty atmosphere. The background shows more industrial structures and the continuation of the water spray.

MARBLE



**MS - 201**



**MS - 202**



**MS - 203**



**MS - 204**

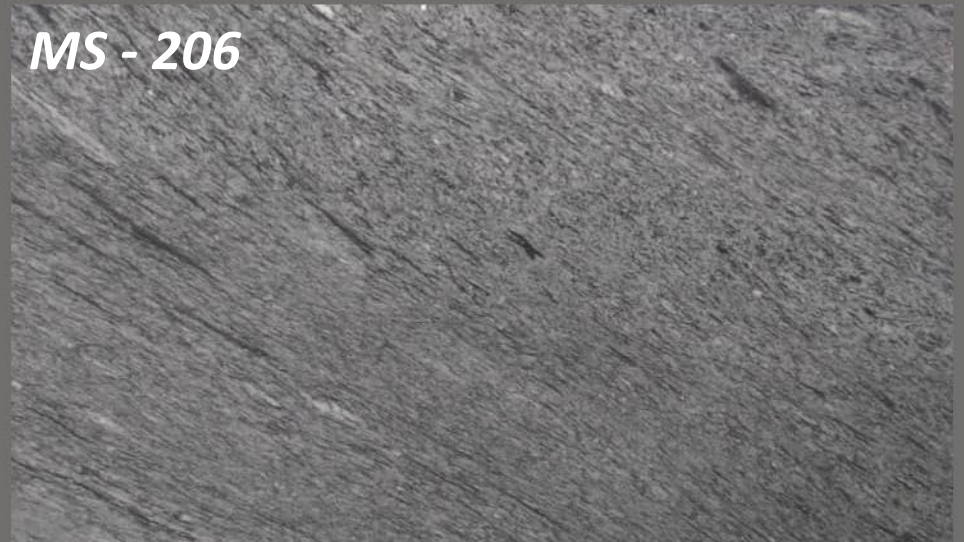




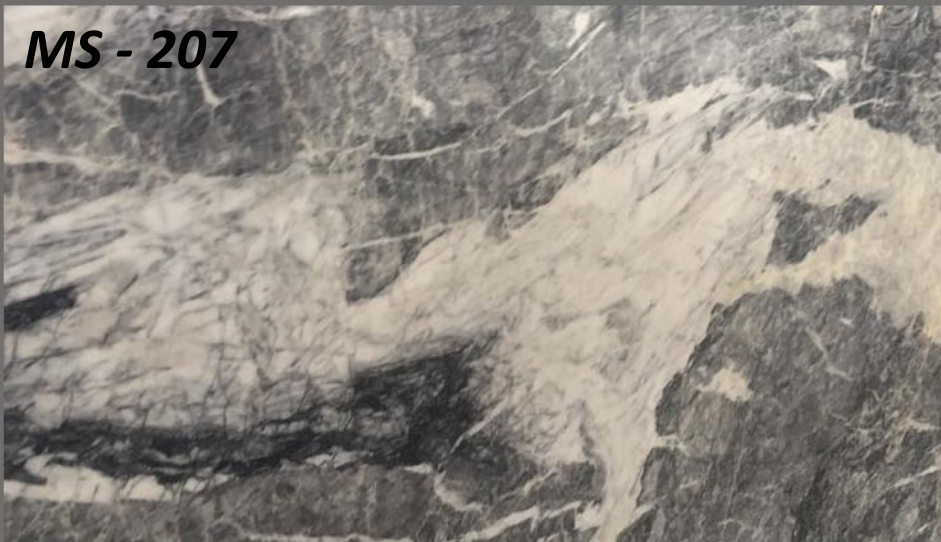
**MS - 205**



**MS - 206**



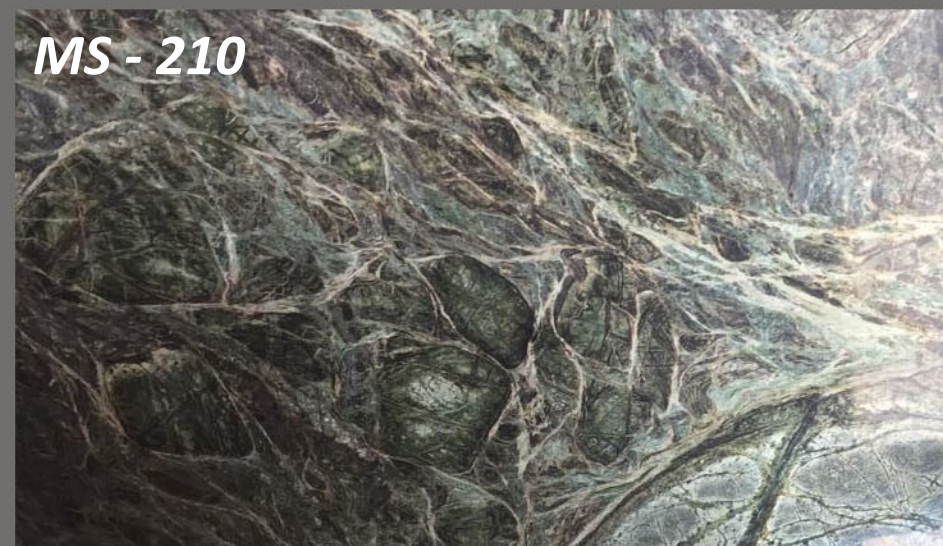
**MS - 207**



**MS - 208**





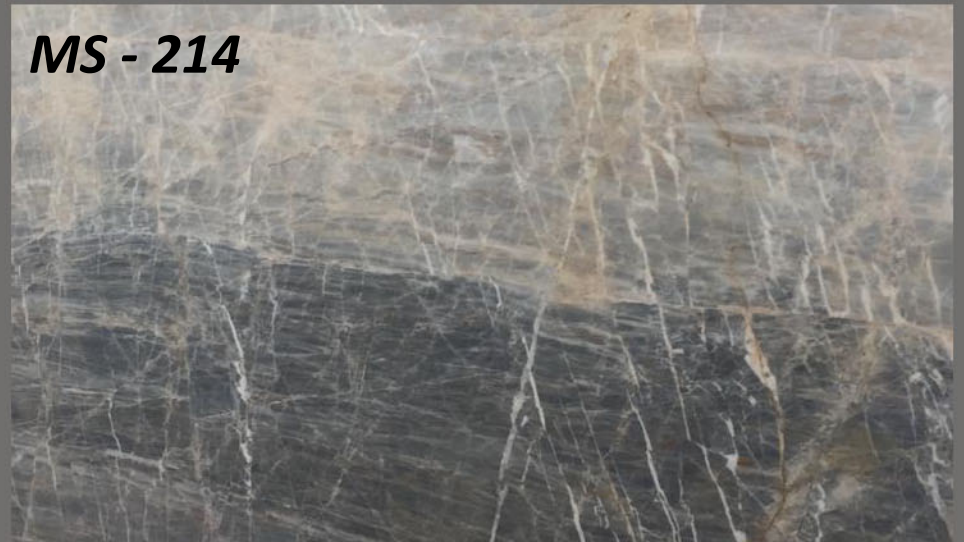




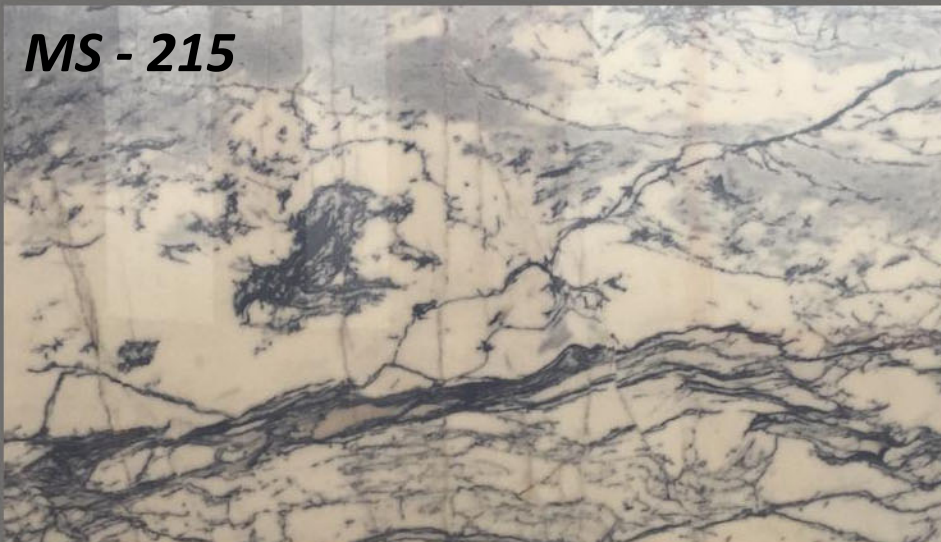
**MS - 213**



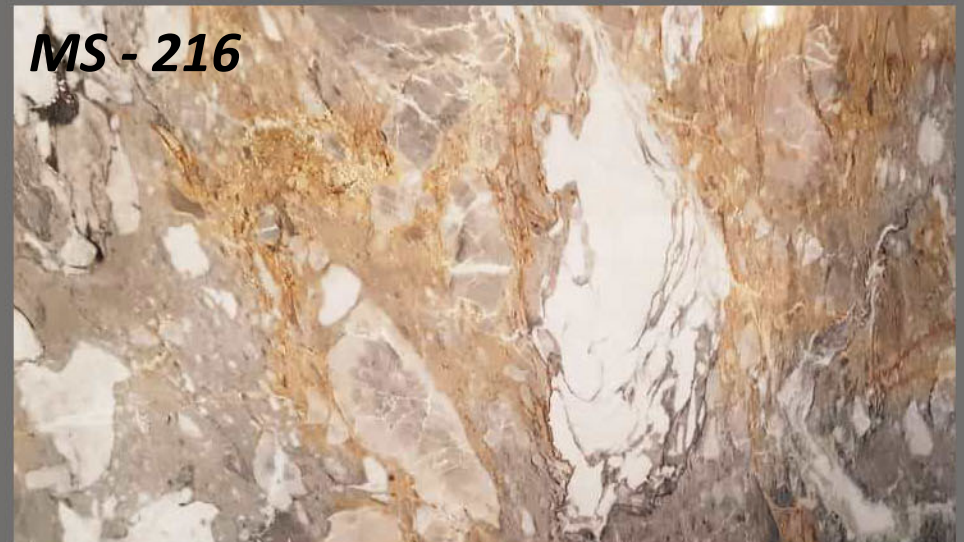
**MS - 214**



**MS - 215**



**MS - 216**





**MS - 217**



**MS - 218**



**MS - 219**



**MS - 220**





A photograph showing several large, rectangular travertine tiles and slabs. The tiles are a warm, golden-brown color with a smooth, polished surface. They are arranged in a grid pattern on a dark, textured surface. Some tiles are slightly offset, revealing the rough, porous underside of the stone. The word "TRAVERTINE" is overlaid in white, serif capital letters on a semi-transparent dark grey banner across the middle of the image.

TRAVERTINE



**TS - 301**



**TS - 302**



**TS - 303**



**TS - 304**







ZISTA Group  
[www.zistagroup.com](http://www.zistagroup.com)

2021